

COMPANY PROFILE



Effectiveness and efficiency through skilled and highly motivated workforce.



Introduction

Hula Mineral Processing (Hula) is a 100% black owned and managed engineering company dealing with outsourced operation and maintenance of mineral processing plants on processing coal, chrome, iron ore, gold and PGM's to mention a few. The company was formed in 2007 and within 3 years in operation, it has successfully embarked on challenging and exciting maintenance and operation projects within the Limpopo province of South Africa. As entrepreneurs in the field of engineering, we realized that the engineering industry needs special attention in our country, and that there is a low participation of black people in the industry. Hence, one of the main reasons behind the formation of the company was to attract more black professionals into the field of engineering and to offer competent services in the operation and maintenance of mineral processing plants. The strategic approach taken into forming a multidisciplinary engineering company was to create and integrate business units which will enhance growth through the diversification strategy.



Vision

To be one of the leading companies to offer the best operation (metallurgy) and maintenance services in mineral processing plants within the SADC region by 2020.

Mission

We create value to our clients through leading edge technology and a highly skilled and motivated workforce.

Values

- Team-work
- Integrity
- Accountability
- Customer relation management
- Quality service



Social development strategy

In pursuing our mission, we have put the following strategy regarding the social development within the community:



- We will present opportunities to FET colleges to do practical in-service trainings with us where they will gain vast experience in plant maintenance and operation.
- We will continue to train and develop our employees to improve their knowledge and skills in the engineering field.
- We will consider the community in which we operate with regards to employment and contribute to the community in which we operate responsibly.
- Through affirmative procurement policies, our local community will be considered first.

Technical services

We specialize in outsourced plant operation (Metallurgy) and maintenance in order to reduce our clients' costs. Our team has the expertise on crushing and screening circuits, dense medium separation, flotation concentrators, comminution circuits and leach circuits.

• Metallurgical services

- Process consulting and optimization
- General plant operation
- Efficiency and performance tests
- Quality control
- Commodity consumption optimization
- Downtime analysis
- Bias testing
- Density control optimization
- Throughput optimization



Cont...



Technical services *Continued...*

- **Asset Management**

We provide superior services in the management of the screens. Screens are classified as one of the most important equipment to be found within almost every beneficiation process. It is therefore important to continuously improve and sustain higher reliability on the screen.

1. Condition monitoring

- We do on-site inspection and detect failures before breakdown

2. Preventative maintenance

- We do onsite maintenance where we replace damaged parts during modular shutdown.
- We rebuild old screens into like-new conditions and install it within a short period to minimize plant downtimes

3. Inventory management

- We monitor and manage all the spares.

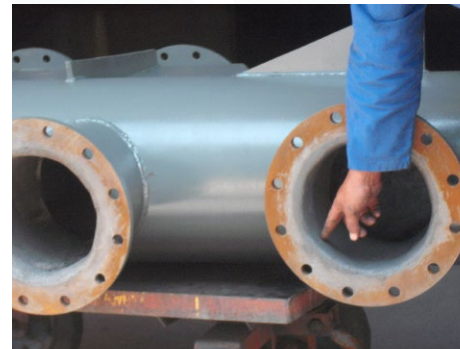




Technical services *Continued...*

- **General plant maintenance on:**

- Platework and steel structures
- Platework lining
- Conveyor belts
- Pump, motors, pulleys etc
- Steel and HDPE pipes
- Screens, teskas, magnetic separators
- Crusher rebuild and maintenance



- **Laboratory activities**
- **Sub-contractor management**
- **Health, Safety and Environmental management**
- **Commissioning services**





Completed and running projects

With only 4 years in operation, Hula has been involved in the following projects:

PROJECT	CLIENT	REFERENCE
GG2 and GG6 screens rebuilding and maintenance	Exxaro – Grootegeluk Coal Mine	Nick Van Staaden
Energy saving by the rightsizing of motors	PPE Technologies	Maurice Morkoni
General plant maintenance contract in the GG2 and GG6 plant	Exxaro – Grootegeluk Coal Mine	Johan Van Rooyen
Processing of chrome dumps in Juglust 417KT	Pheladi	Sam Madisha
Design, installation and commissioning of quarry plant.	Letlapa Quarry Mining	Reguel Matlala
3 years maintenance contract of the GG2 tip bin through the welding of half cups	Exxaro – Grootegeluk Coal Mine	Dawie du Plessis
General consulting services on the processing of chrome, gold and platinum.	Sumbe Holdings	Sam Madisha
Modification of the thickener underflow system	Outotec	Henry Van der Walt
General platework	Kram Engineering	Phillip Van der Merwe
Fencing of the tool store	East Rand Cranes	Maria Nel
Colourcoding of all the Grootegeluk plant according to the SABS standards	Exxaro – Grootegeluk Coal Mine	Maxwell Mbatha
Modification of sievebends in the GG6 plants	Meshacape	Ross Dott
Crushing and screening of quarry	Letlapa Quarry Mining	Reguel Matlala
Module 21 crusher rebuild	Exxaro - Grootegeluk Mine	Nick Van Staaden
Screening of riversand	Medupi Power Station – Basil Read	Mariaan Wild



The Hula team

Mr Casca Rudzani Mudau

Education:

Diploma in Metallurgical Engineering, 1999, Vaal Technikon, South Africa.

Experience:

- 4 years as master technician at Grootegeluk Coal Mine.
- 3 years as the Head of Production at Grootegeluk Coal Mine.
- 2 years as the Metallurgical Engineer in the Exxaro's GG6 project.

Responsibilities:

Set long term goals and medium term goals for organization.

Ms Mandisa Masango

Education:

BEng in Metallurgical Engineering, 2005, University of Pretoria, South Africa.

Experience:

4 years as a Metallurgical Engineer at the Exxaro, Grootegeluk Coal Mine, Process Development team.

Responsibilities:

Project initiation, development and management.

Mr Walter Makaba

Education:

Btech in Electrical Engineering, 2011, Tshwane University of Technology, South Africa.

Experience:

5 years experience as maintenance engineer at Middelburg Ferrochrome.

Responsibilities:

Lead maintenance team, continuous improvement projects, project management.



Contact Details

Office: 014 763 1650

Cell: 082 714 7783/ 084 556 0639

Fax: 086 695 6017

Email: info@hula.co.za

www.hula.co.za